

Dunnell Engines

**RMP 1480
Zetec Alternator
&
Water pump drive kit**

APPLICATION:

**Zetec Focus 'Upgrade' engine
1.8 / 2.0**

**Tel +44 (0)1449 677726
Fax +44 (0)1449 770539
e-mail Info@dunnellengines.com
www.dunnellengines.com**

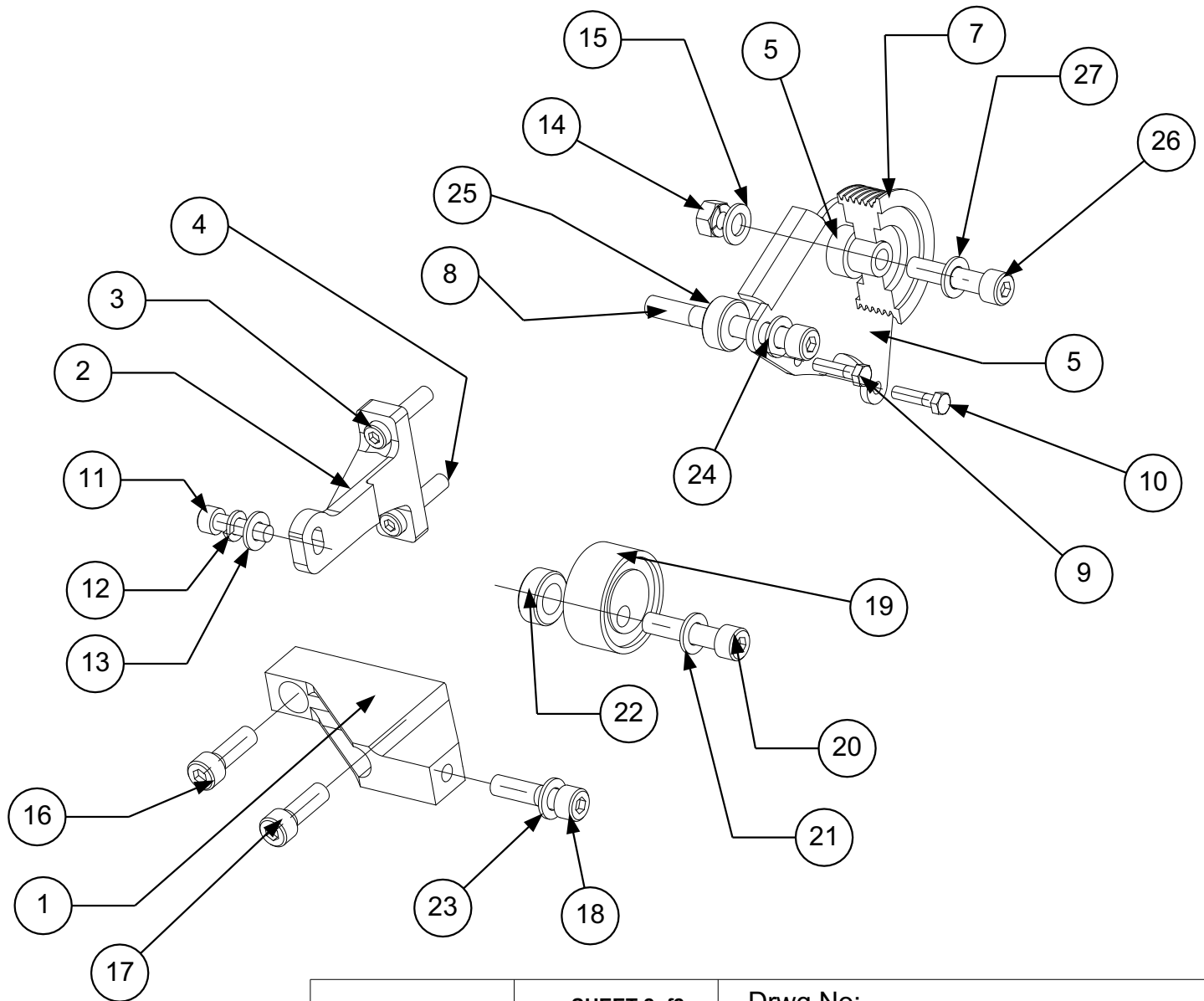
*Partners: M. Dunnell & P. Dunnell
Unit 10, TOMO Business Park, Creting Road, Stowmarket
Suffolk, IP14 5AY. England*

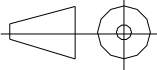
26 August 2008

This kit has been designed to allow the correct rotation of the water pump in the later level Zetec engines. (Often referred to as 'Blacktops') with the addition of a high specification, lightweight compact alternator. Being a fixed position alternator, with the belt tension being set via an adjustable tensioner pulley, a robust installation is achieved.



Item No.	Part Number	Qty	Description
1	RMP1492	1	Available on Purchase
2	RMP1490	1	"
3		1	"
4		1	"
5	RMP1485	1	"
6	RMP1486	1	"
7	RMP1483	1	"
8		1	"
9		1	"
10		1	"
11		1	"
12		1	"
13		1	"
14		1	"
15		1	"
16		1	"
17		1	"
18		1	"
19	RMP1482	1	"
20		1	"
21		1	"
22		1	"
23		1	"
24		1	"
25		1	"
26		1	"
27		1	"



Proj Angle 	SHEET 2of2	Drwg No:
	SCALE 1:3	RMP 1480 - AB Assy
	Dim - METRIC	Description:
	Drawn: PD	Zetec Upgrade Alternator Assy
A4	DATE: 27th Aug 08	DUNNELL ENGINES® Stowmarket - Suffolk - England